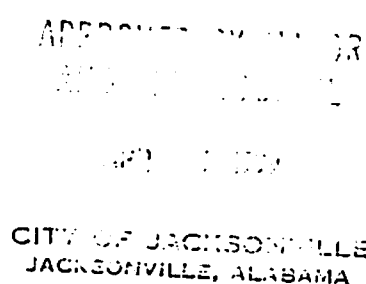
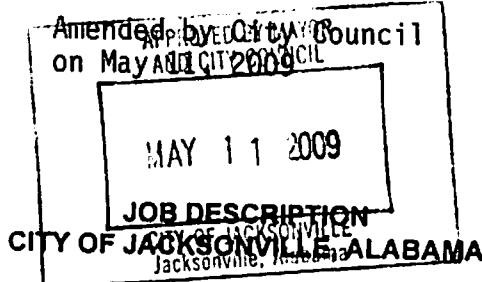


CSB
JUN 7 1999
Amendment

Approved by CSB on
May 11, 2009



RECREATION MAINTENANCE OPERATOR

CODE: 814

DESCRIPTION

This is a semiskilled and frequently supervisory work in the daily routine of parks and grounds maintenance which includes the operation of trucks, mowing equipment, front-end loaders, attached mechanical equipment.

Employees in this class are responsible for the skilled and safe operation of automotive equipment and the prompt execution of assignments according to established routine or special instructions received from a superior. Employees may also perform manual labor, and duties frequently include responsibility for supervising employees. Employees in this class are responsible for the maintenance operation of the City pools, for overseeing and carrying out the daily routines for athletic field preparation and maintenance. Position also requires that the proper service and maintenance be performed on all equipment that is operated. Work is reviewed through personal inspection and through observation of compliance with established work or routine schedules.

EXAMPLES OF WORK PERFORMED

(All duties listed may not be found in each position, nor does the list include all tasks which may be assigned to positions in this class.)

Operate mowing equipment to cut and maintain athletic fields, City parks, and City grounds.

Perform carpentry, plumbing, electrical, painting, sports field maintenance, and the supervision thereof. Maintain proper water and sanitation conditions at the City's pools.

Drive trucks hauling dirt, sand, gravel, lumber, and other materials to or from places of work.

Service equipment and make minor field repairs and adjustments; report need for major repairs to equipment.

Supervise, as required, and perform manual labor in loading, unloading, or other related operations.

Assist in landscaping activities.

Perform related work as assigned.

REQUIRED KNOWLEDGE, SKILLS, AND ABILITIES

Some knowledge of the methods and techniques of automotive equipment operation and repairs.

Some knowledge of the traffic laws, ordinances and rules involved in the operation of automotive vehicles.

Some knowledge of occupational hazards of applicable safety precautions in operating equipment.

Skill in the operation of various types of standard automotive equipment as demonstrated by a driving test.

Ability to operate trucks and light tractors and mowing equipment safely and according to traffic laws and regulations.

Ability to make minor repairs and adjustments and to service automotive equipment.

Ability to understand and follow oral and written instructions.

Some knowledge of basic plumbing, carpentry, electrical, roofing, and painting.

Knowledge and maintenance of layout and design of athletic fields.

Basic knowledge of different turfs and sod and their care.

Basic knowledge of swimming pool maintenance and repair.

Working knowledge of pool filter and chemical operations.

Working knowledge of chlorine gas and other related pool chemicals.

QUALIFICATIONS

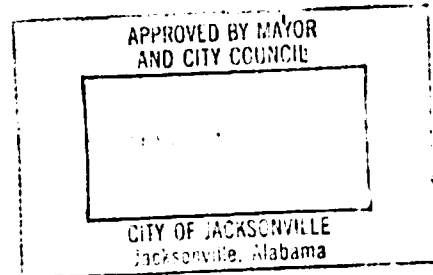
Completion of the eighth school grade; some experience in the operation of trucks and related automotive equipment.

NECESSARY SPECIAL REQUIREMENTS

Must possess a valid State of Alabama driver's license, ~~a valid State of Alabama commercial driver's license (CDL)~~ and a driving record suitable for insurability.

Must obtain a valid State of Alabama commercial driver's license (CDL-Class B) within 90 days of hire, or forfeit employment.

**Amended by Civil Service Board 5/11/09.



f t k
5/12/09